

·twig·EDUCATION

Support for Distance Learning of KS1, 2, 3 & 4 STEM

Twig Education is at the forefront of STEM education, delivering award-winning K-12 programs to over 60 countries in 19 languages.

Our unique storytelling approach structures learning around a narrative to aid student sensemaking and heighten engagement. In partnership with **Imperial College London** and **Stanford's SCALE** group, our goal is to create a scientifically literate society by inspiring the next generation of scientists and engineers.

Twig Education would like to offer our support and provide free access to our supplemental STEM resources, which allow for distance learning to students during a school closure period.

This support can take the following form:

- Access to our full lesson solutions for access by a teacher leading a KS1 - 4 distance lesson.
- Access to our full lesson solutions for access by KS3 and KS4 students conducting independent learning sessions.
- Integration of individual content assets, such as videos or activities into individual teacher lesson plans.



Watch this short video for a quick overview of all our educational resources

learn.twigeducation.com/twig-education-promo

Introduction to Twig Education's KS 1-4 Supplemental STEM Resources

Our resources have been created to inspire, educate, and support students and teachers as they transition to a genuinely 21st-century curriculum and are specifically created for students with captivating real-world content relevant to their age group.



Ages 4–7

www.tigtagjunior.com

Preview access via

<https://www.tigtagjunior.com/hi/UXMWVRM17FK0?next=/>

A complete online resource for younger children, to introduce scientific concepts in a simple, fun and engaging way.

- Foundational science
- Teacher-led
- 100 videos
- 49 lesson plans
- 50+ games



Ages 7–11

<https://www.tigtagworld.co.uk>

Preview access via

<https://www.tigtagworld.co.uk/hi/UXMWVVM17FK0?next=/>

Engaging visual resources and lesson activities for primary school students.

- Science and geography
- Teacher-led
- 800+ videos
- 128 Lesson Units containing:
 - Practical enquiry-based activities to boost science skills
 - Interactive content, games, quizzes and flashcards



Ages 11–16

www.twig-world.com

Preview access via

<https://www.twig-world.com/hi/EOYONL8U9Z96?next=/>

Award-winning films that combine visual and adaptive learning, supported by hundreds of lesson plans, visuals, and other classroom resources.

- STEM and geography
- Teacher or student-led
- 1,700+ videos
- 150+ learning material packs
- 130+ Math lesson plans
- Science & Geography “Assignments” for Homework



Ages 5 - 11

Review via www.reachoutreporter.com

Created through a partnership between Tigttag and Imperial College London, Reach Out Reporter is an online primary science news service which helps teachers integrate topical science into everyday teaching and learning.

- 70+ features videos
- Weekly news updates
- Factpacks and lesson activity ideas

How Teachers and Students Can Use Twig Education Resources in a Distance Learning Session



Twig, Tigtag and Tigtag Jr each feature both curriculum videos and context videos.

Curriculum videos cover the main teaching points for each topic.

Context videos use exciting examples from the real world to deepen your pupils' understanding of topics.

There are also special video categories on each site. **Twig** features **Experiment videos**, showing scientific experiments from setup to real-world application, with a selection of extensive learning materials. Experiment videos are ideal for remote learning because students can observe and collect data from experiments that they would be unable to perform at home.

There are also 1,000 short **Glossary videos**, giving students definitions of key vocabulary and real-world examples of their use—all in 30 seconds.

Tigtag features **Tidbit videos**. Only 30 seconds long, these encourage fun, active learning with exercises like True or false and Odd one out.

Alongside each film teachers will also have access to the **film transcript** which tells you what is discussed in the film, **film info** which gives the teacher the key learning points within the film and **related videos** that give you other films linked to the topic.

Teachers can embed videos into existing lesson plans and presentations for remote study. Videos can also be integrated into your own LMS.



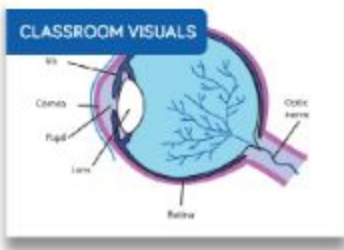
Tigtag and Tigtag Junior offer a range of **lesson plans** that will allow you to teach a lesson remotely with minimum preparation. Each topic includes a digital and downloadable **ready-made 60-minute lesson plan** PDF with all the practical activities, classroom visuals, activities, worksheets ready to teach instantly. Twig Maths provides lesson plans at basic and advanced level with accompanying worksheets and diagrams to support students maths learning.



Activities using everyday materials can be adapted for distance learning and assigned to students, while **Activity sheets** can be downloaded and emailed to students or added to your LMS. The time each activity takes is stated so teachers can successfully fit these into their lesson plans.



Games and **multiple-choice questions** let teachers assess student progress from afar. **Quizzes** are also available to test students' understanding.



Thousands of **classroom visuals** each labelled with learning points or keywords help visualise concepts, while reinforcing them at the same time.



Background knowledge for each topic ensures teachers have everything they need to make sure they know about the topic before they begin a lesson session.



Tigtag CLIL also includes content to [support the learning of science in English](#) and is also suitable for SEND students. Contact us directly for access.



CLIL Lesson Plans

To help the teacher deliver outstanding lessons in English.



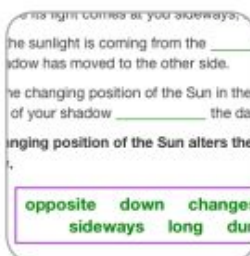
Phrase bank

Verbs, phrases and sentence structures to help students build accurate sentences.



Practical activities

Enquiry-based activities to boost science and English skills.



Transcript exercises

Gap-fill exercises using film transcripts for reading and listening.



Classroom Visuals

Beautiful images with language support.



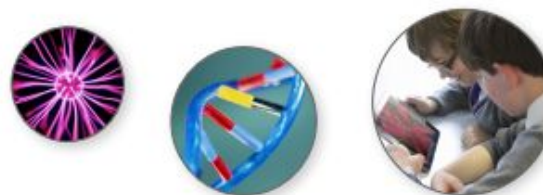
Interactives

Games, quizzes, flashcards and more.



Glossaries

Interactive glossary of scientific terms with audio samples.



www.tigtagworld.com/clil

Technical Guidelines for Providing Twig Education's KS1-4 Supplemental STEM Resources Directly to Schools

Twig Education or the Multi Academy Trust can send an email to schools or teachers as agreed, with direct access URLs for each resource for immediate access.

To contact the schools, Twig Education will require the school name and email address. If you'd like Twig Education to contact teachers directly, the following information will be required: first name, last name, email address and school name.

You may also host these direct access URLs on an LMS platform, along with any agreed supporting product information if you prefer Twig Education not to contact schools.

The URLs will be refreshed every month and access will be available for the duration of school closures or as agreed.

Twig Education, on discussion and approval, will also be able to send additional emails to teachers with remote lesson support and product guidance.

If other access requirements are required, such as direct access to individual films to be integrated to support individual learning points within your LMS, please contact Twig to discuss.



Overview of Additional Activities from Twig Education to Support Schools During School Closure

Over the coming weeks, we'll be making it easier than ever to use our resources as remote learning solutions.

We will provide support for integrating Twig content into LMS platforms, as well as information on how to get the most out of our content.

We can also provide further support on discussion and request.

For more information and to discuss further please contact Susan McMahon, smcmahon@twigeducation.com

